

ENFIELD CROQUET CLUB

HAYTER ROTARY MOWER – Harrier 412C Electric start variable speed

EASY GUIDE

Preparation

1. This mower should only be used for cutting the grass surrounding the lawns, NOT THE ACTUAL CROQUET LAWNS.
2. Ensure you are familiar with the manufacturer's owners handbook (in hut and on ECC website) and in particular the safety precautions.
3. Move mower to safe level space.
4. Check oil level. Wipe around oil cap, remove cap, and check level on dip stick is between marks. Don't use if oil is low or, if you know how, top up before use (don't overfill).
5. Check fuel level. Wipe around cap, remove cap, and look to see fuel level. See separate fuelling sheet.
6. Adjust height of cut. Lever left side towards front of mower. Forward shorter, backwards longer.

Starting, operating, turning & stopping

1. See other side of this sheet.
2. NOTE re have the 412 model with electric start. The key will return to an upright position once released.

Problem Starting

1. If the engine fails to turn over on the electric start the battery may be flat. Try starting with hand cord.
2. Wait and try again in a few minutes.
3. Try hand cranking. A good pull on the starting cord is sometimes better than the electric start for the initial starting.
4. If mower fails to start after several tries, and especially if you can smell petrol, wait a few minutes and then try with throttle control set to FAST rather than CHOKE.

While using

1. Release both handlebar levers and ensure machine has fully stopped before emptying the grass box or adjusting the height of cut etc.
2. If the grass discharge chute gets blocked with grass – happens when grass is damp, or box gets over full – stop and empty the box and clear the chute. Ensure machine & blades have stopped before clearing. **Do not put hands, feet etc where they may contact the blade.**

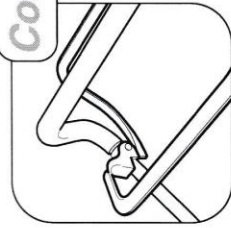
Finishing – Important

1. **Please leave the mower as you would wish to find it.**
2. Clean the mower by brushing or wiping.
3. Remove spark plug lead before working underneath. Tilt mower backwards and **never on the right-hand side** (prevents oil getting into air filter and causing damage).
4. Top up the fuel tank. Replace spark plug lead if removed.
5. Put back in the shed.
6. Report any problems or breakages to the Lawns Manager or Committee Member.

OPERATING THE MOWER

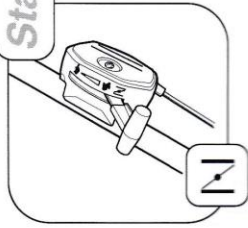
Controls

Operate all control levers several times and ensure that the cables move freely. Check that the engine stop and ground drive clutch levers return freely to their rest position when released. Whilst operating the engine throttle mechanism slight resistance should be felt when moving the lever to the 'choke' position.



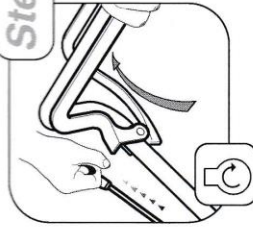
Starting - Step 1

Move the throttle control lever to the 'choke' (N) position before starting a cold engine. Move the throttle control lever to the 'fast' position before starting a warm engine.



Step 2

Stand behind the mower and hold the handlebar together with the engine stop lever with your left hand. With your right hand hold the engine start - grip and pull slowly until resistance is felt, then pull rapidly to crank the engine. Carefully return the start grip to the storage position when the engine starts. If the engine does not start after 5 attempts - refer to "Trouble Shooting".

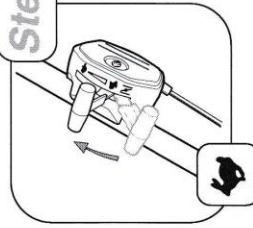


The engine stop lever must be held firmly against the handlebar to start and keep the engine running. If the engine stop lever is released the engine will stop.

Step 3

Allow the engine to warm up and move the throttle lever to the 'fast' position after starting a cold engine.

To prevent damage never pull the engine start grip when the engine is running.



1.14

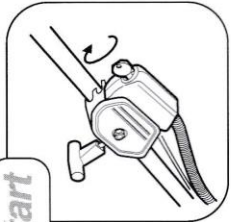
OPERATING THE MOWER

Electric Start

(412 Only) - Stand behind the mower and hold the handlebar together with the engine stop lever. Turn the ignition key in a clockwise direction and hold in position to crank the engine. When the engine starts release the key and move the throttle to the fast position after starting a cold engine.

Note: cranking the engine for more than 15 seconds in any one minute can damage the starter motor. If necessary the engine can be started manually without using the ignition switch.

To prevent engine damage do not operate the ignition key when the engine is running.



Forward Travel

(410 Only) - Hold and push against the handlebar with both hands to move the mower forwards.

(412/413 Only) - Hold the handlebar and operate the ground drive clutch lever to power the mower in a forward direction.

When the ground drive clutch lever is disengaged the mower may be pushed. This feature is useful when mowing in confined areas.

(412/413 Only) - Ground speed may be adjusted by operating the speed variator control. Push forward to slow down and pull back to speed up. **IMPORTANT To avoid damage this control should only be operated whilst the engine is running. If the engine stop lever is released the engine will stop.**



Turning

To make a wide turn steer the mower with the handlebar in the direction required.

To make a tight turn release the ground drive clutch lever, apply downward pressure on the handlebar to raise the front wheels just above ground level and steer in the required direction.

To prevent accidents do not raise the front of the mower excessively when making a turn. Never raise the rear of the mower when the engine is running.

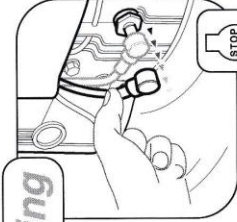


Stopping

Release the ground drive clutch lever, reduce the throttle setting and release the engine stop lever.

Emergency stop: Release both ground drive clutch lever and engine stop lever together.

If the engine fails to stop, move the throttle lever to the 'slow' position and disconnect the spark plug lead.



1.15